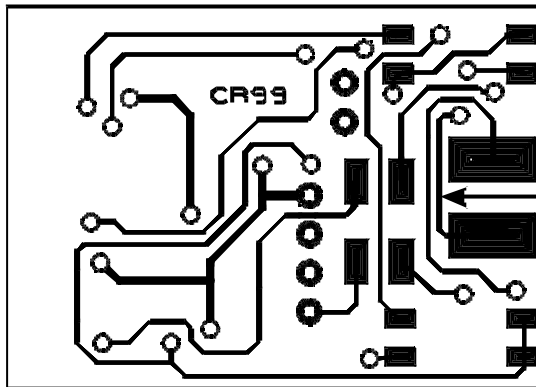




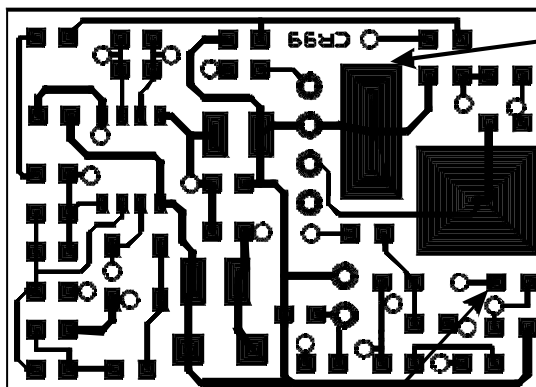
TOP SIDE



A (cut this track)

B (pot. terminal n:o 2)

BOTTOM SIDE



C (pot. terminal n:o 1)

D (pot. terminal n:o 3)

1. Cut the track "A" on the top side of the PCB using a small knife. Be very careful!
2. Connect a 20 k Ω or 22 k Ω logarithmic (audio taper) potentiometer according to the following table. See the pictures above.

Harri Saastamoinen

Adding a volume control to
CR99



17.06.00 16:12

Updated 17.06.00



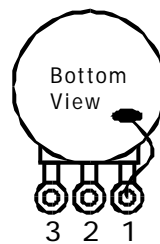
Core CR99 volume
pot.doc



17.06.00 16:12

Volume pot terminal n:o	Terminal name	Connect it to
1	CCW	Pad "C" on the bottom side (Jack Ground)
2	MID	Pad "B" on the top side (Jack Tip)
3	CW	Pad "D" (or the via hole) on the bottom side (Preamp Out)

Here is a simplified drawing of how the potentiometer terminals are positioned:



Connect also the metal case of the pot to terminal n:o 1. This reduces hum and other interference.

Be careful not to damage any components. Keep all wires as short as possible.