


Jouni Mitjonen  
 18.12.02

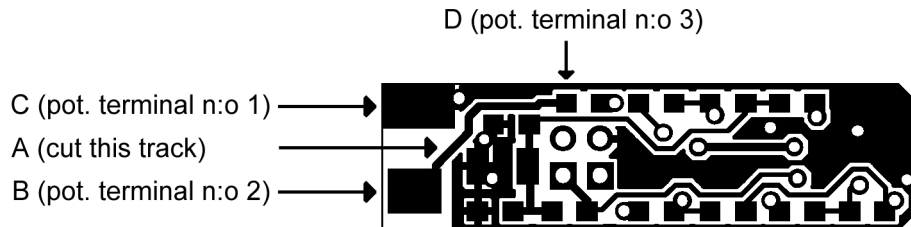
Adding a volume control to  
 A1  
 A1 Vol Pot.doc



18.12.2002 11:53



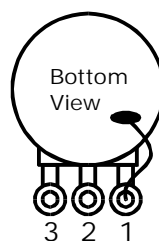
18.12.2002 11:53



1. Cut the track "A" on the top side of the PCB using a small knife. Be very careful!
2. Connect a 10 kΩ or 22 kΩ logarithmic (audio taper) potentiometer according to the following table. See the pictures above.

Volume pot terminal n:o	Terminal name	Connect it to
1	CCW	Pad "C" on the top side (Jack Ground)
2	MID	Pad "B" on the top side (Jack Tip)
3	CW	Pad "D" on the top side (Preamp Out)

Here is a simplified drawing of how the potentiometer terminals are positioned:



Connect also the metal case of the pot to terminal n:o 1. This reduces hum and other interference.

Be careful not to damage any components. Keep all wires as short as possible.